

DIGITAL PANDEMIC

【CONCEPT】

Pandemic happened.

It spreads rapidly and affects everything in our daily lives.
But don't be afraid, because it is not a life-threatening virus.

“Digital Pandemic”

It comes from the present and goes into the future.

In a world of digital, we express our visions.

What would you do from now on?

Director : Misaki Abe

Video Editor : Amane Fukuhara/Haruto Kataoka/Kaori Hirowatari

Misaki Abe/Moe Kagiyaama/Sho Otsuka

Yumiko Umehara/Yu Hamana

CG Editor : E-a Studio/So'n Bi

Music : Misaki Abe/Yu Hamana

【aridas】 Yu Hamana

LOOK 1



LOOK 2



LOOK 3



• CONCEPT : Vitality of ant, sociality

• CREDIT TIRLE

【Costume Design】 Yu Hamana

【Video Editor】 Yu Hamana

【Model】 Akane Toyota

【Screenwriter】 Yu Hamana

【Cameraman】 Yota Takahashi/Yu hamana

【GI】 Kaori Hirowatari

LOOK 1



LOOK 2



LOOK 3



• CONCEPT : Shining clothes full of self-love

• CREDIT TIRLE

【Costume Design】 Kaori Hirowatari

【Video Editor】 Kaori Hirowatari

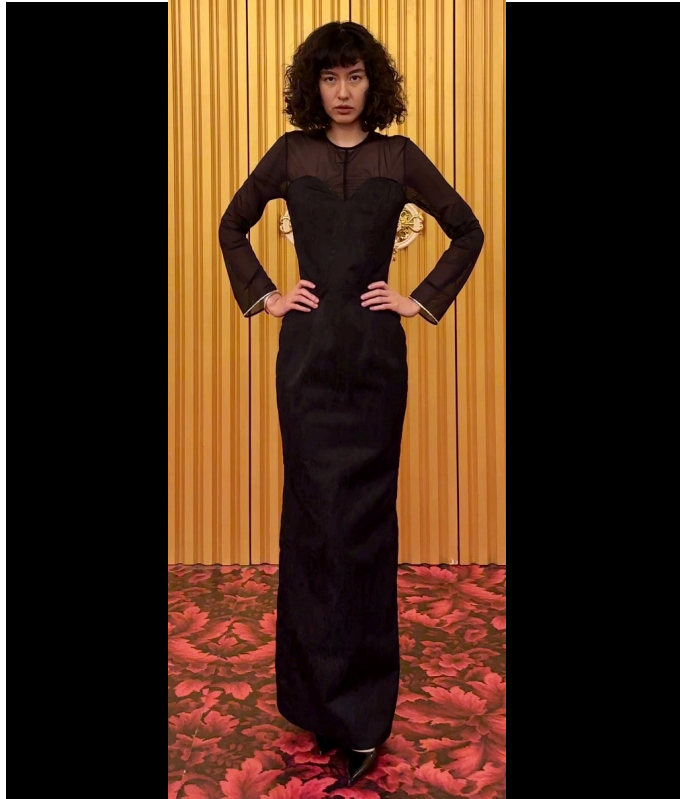
【Model】 Kaori Hirowatari

【Screenwriter】 Kaori Hirowatari

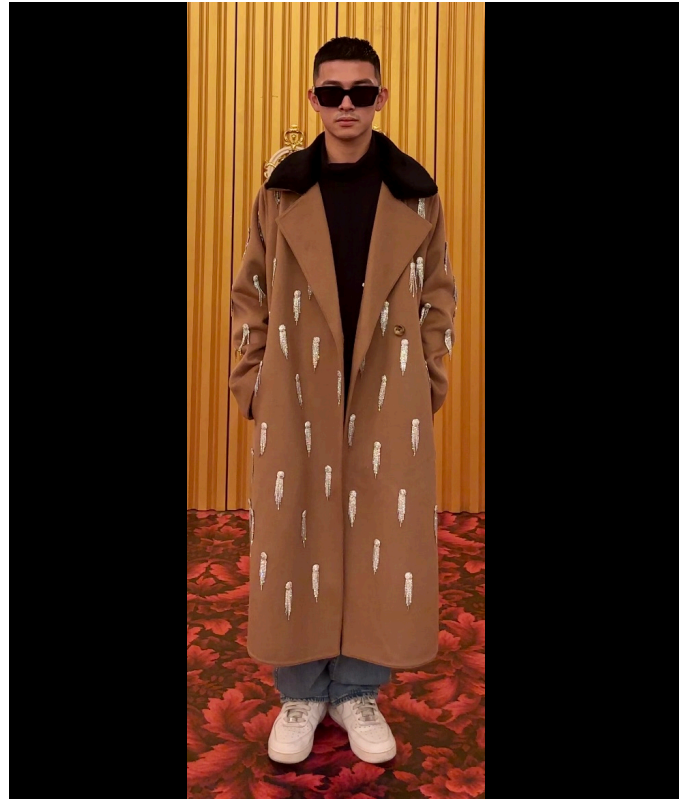
【Cameraman】 Moe Kagiya/Yumiko Umehara/Yu Hamana

【LUXQLO】 Haruto Kataoka

LOOK 1



LOOK 2



LOOK 3



• CONCEPT : LUXURY CLOTHING

• CREDIT TIRLE

【Costume Design】 Haruto Kataoka

【Video Editor】 Haruto Kataoka

【Model】 Amane Fukuhara/Yu Hamana/Zen To

【Screenwriter】 Haruto Kataoka

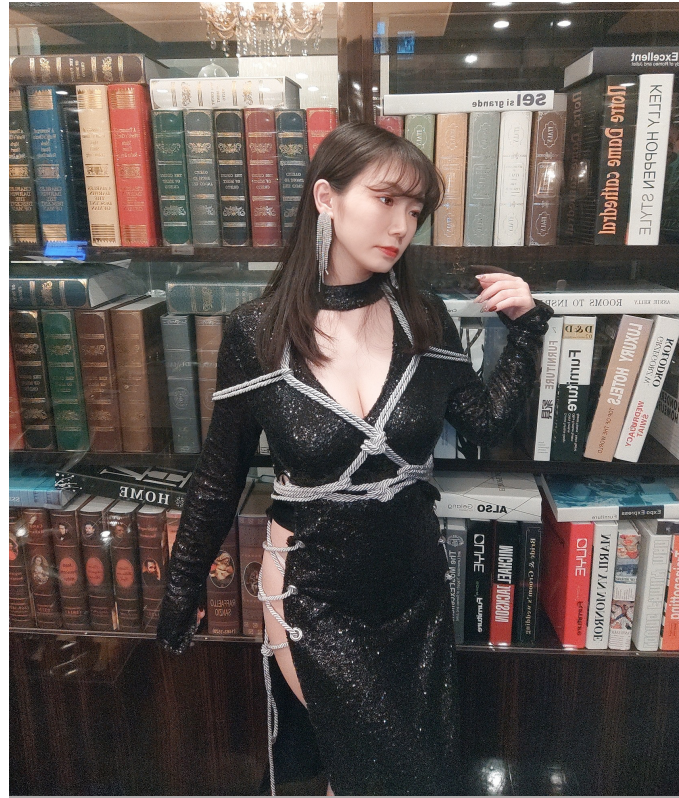
【Cameraman】 Haruto Kataoka

【S & M】 Amane Fukuhara

LOOK 1



LOOK 2



LOOK 3



• CONCEPT : Desire

• CREDIT TIRLE

【Costume Design】 Amane Fukuhara

【Video Editor】 Amane Fukuhara

【Model】 Amane Fukuhara/Ryoma Mori/Sohei Nakamura

【Screenwriter】 Amane Fukuhara

【Cameraman】 Amane Fukuhara/Yu Hamana

【MEJI】 Sho Otsuka
LOOK 1



LOOK 2



LOOK 3



- CONCEPT : Love at First Touch
- CREDIT TIRLE
- 【Costume Design】 Sho Otsuka
- 【Video Editor】 Sho Otsuka
- 【Model】 Angela Chubak

【Screenwriter】 Sho Otsuka

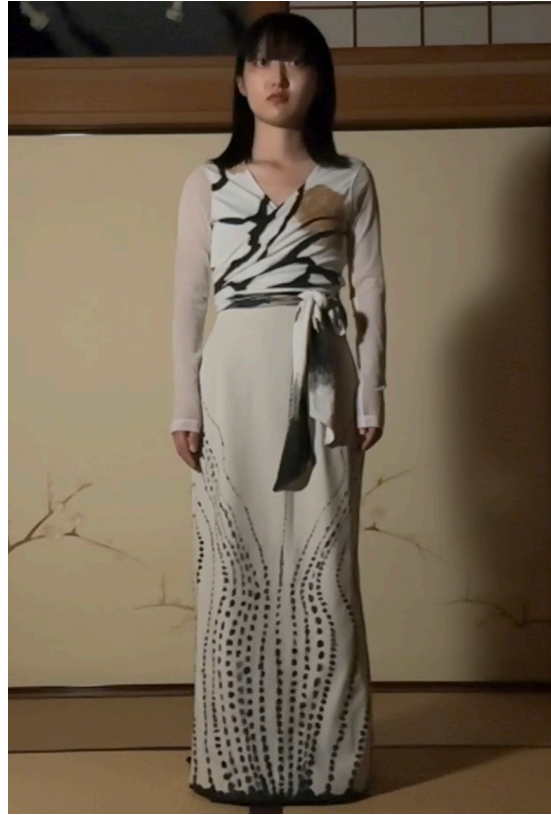
【Cameraman】 Haruto Kataoka/Sho Otsuka

【KAIKI】 Yumiko Umehara

LOOK 1



LOOK 2



LOOK 3



• CONCEPT : In a world where you can be anything you want to be, let's expose the superficiality of the human rawness that lies deep within.

• CREDIT TIRLE

【Costume Design】 Yumiko Umehara

【Video Editor】 So'n Bi/Yumiko Umehara

【Model】 Asuka Seki

【Screenwriter】 Yumiko Umehara

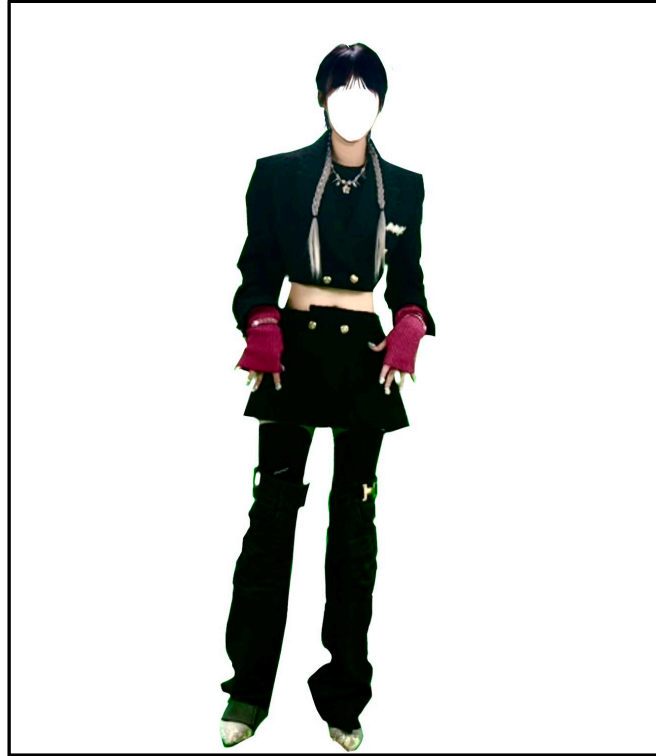
【Cameraman】 Haruto Kataoka/Yu hamana

【WOTA】 Misaki Abe

LOOK 1



LOOK 2



LOOK 3



• CONCEPT : The Game is My Lovely Life

• CREDIT TIRLE

【Costume Design】 Misaki Abe

【Video Editor】 So'n Bi/Misaki Abe

【Model】 Misaki Abe

【Screenwriter】 Misaki Abe

【Cameraman】 Moe Kagiya

【GUN】 Moe Kagiya LOOK 1



LOOK 2



LOOK 3



• CONCEPT : Give the flower instead of digital violence

• CREDIT TIRLE

【Costume Design】 Moe Kagiya

【Video Editor】 So'n Bi/Moe Kagiya

【Model】 Huynh Le Bao Tran/Nguyen Quoc Anh Thu

【Screenwriter】 Moe Kagiya

【Cameraman】 Moe Kagiya

【Material Provider】 **ultrasuede**[®]